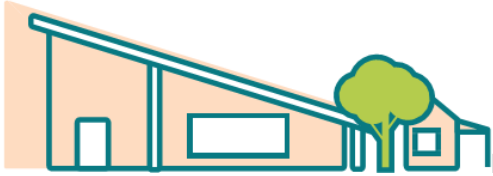




COBDOGLA
Primary School



2023 annual report to the Community

Cobdogla Primary School

Cobdogla Primary School number: 721

Partnership: Berri & Barmera



School principal:

David Ness

David Ness

Date of endorsement:

20/02/2024



Government
of South Australia
Department for Education

Context Statement

Cobdogla Primary School caters for students from R-7. At the time of this report, the enrolment in 2023 is 103. Cobdogla Primary School is classified as Category 4 on the Department for Education Index of Educational Disadvantage. At the time of this report, the school population includes 7% Aboriginal students, 8% students with disabilities, 9% students with English as an additional language or dialect (EALD) funded background, 1% children/young people in care. Further information about the school is available on the school's website (including its context statement), as well as the My School website.

Governing Council Report

Cobdogla Primary School's Governing Council had, another positive and productive year.

A major focus of Governing Council this year was to ensure sufficient funding was allocated to ICT facility upgrades. Funding enabled the purchase of 20 student laptops, 6 Ipads and 3 Promethean boards for classrooms. The significant expenditure enables all student's year 3 and above have a personal lap top.

Further to ICT, Governing Council approved funding to be spent on improvements to the school. This included the upgrade of two classrooms ceilings and air conditioning units. These facility updates ensure that our classrooms provide an effective learning environment. In addition to the classroom, funding was allocated to the playground with the inclusion of a flying fox.

Another aspect of Governing Council is to review policies and update them when necessary. Upon review of the Uniform Policy, Governing Council made various recommendations. These amendments enable the school's policies to reflect a positive learning environment.

On behalf of Governing Council, I would like to thank our Principal David Ness, the teaching faculty and support staff. Our pupils are fortunate to be surrounded by an incredible group who go above and beyond to provide a balanced education in a supporting environment.

Cobdogla Primary School is lucky to have an active group of volunteers in the Parent's and Friends Group. Volunteers are vital in fundraising, school events and overall support. This year they assisted in hosting sports day, 'Mothers/Father's Day stalls and the very successful colour run. Thank you for your assistance and support this year.

Finally, thank you to my fellow Governing Council members. Your contribution to the school community is very much appreciated.

Taylor Swinstead

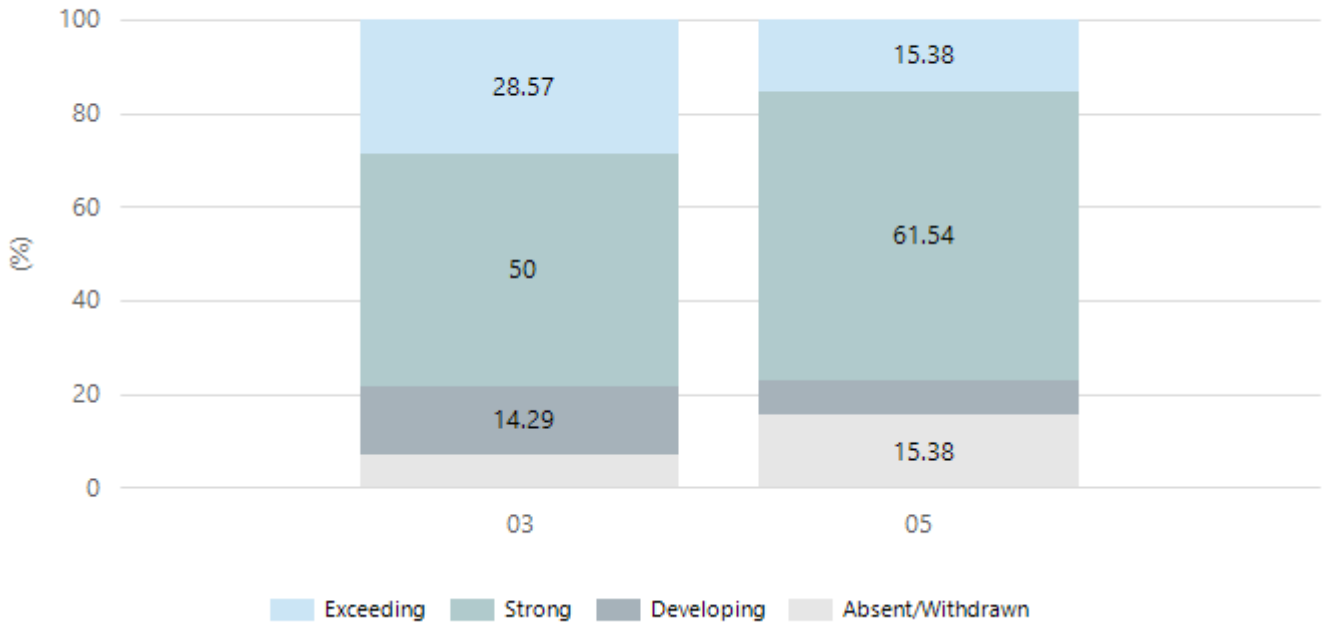
Governing Council Chairperson

Performance Summary

NAPLAN Proficiency

In 2023, the Australian Curriculum, Assessment and Reporting Authority (ACARA) - a Commonwealth Independent statutory authority - announced changes to NAPLAN performance reporting. This new way of reporting by ACARA that NAPLAN results from 2023 will not be comparable to previous years. The new approach replaces the previous numerical NAPLAN bands and the national minimum standard.

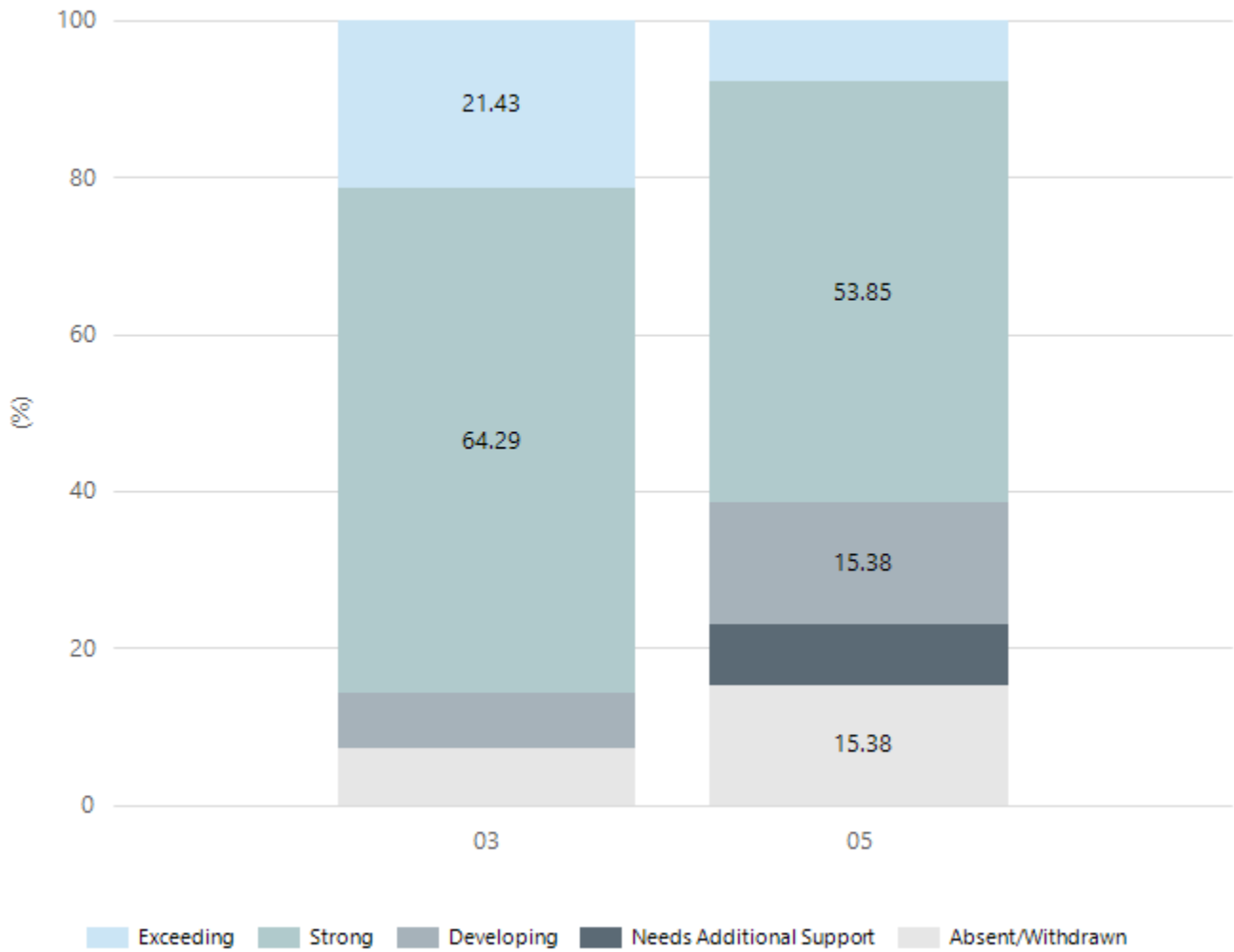
Numeracy



Year Level	03	05
Exceeding	4	2
Strong	7	8
Developing	2	1
Absent/Withdrawn	1	2
Total	14	13

Data Source: Department for Education Assessment Data Holdings, 2023. When there are less than six students in a cohort, no data is supplied.

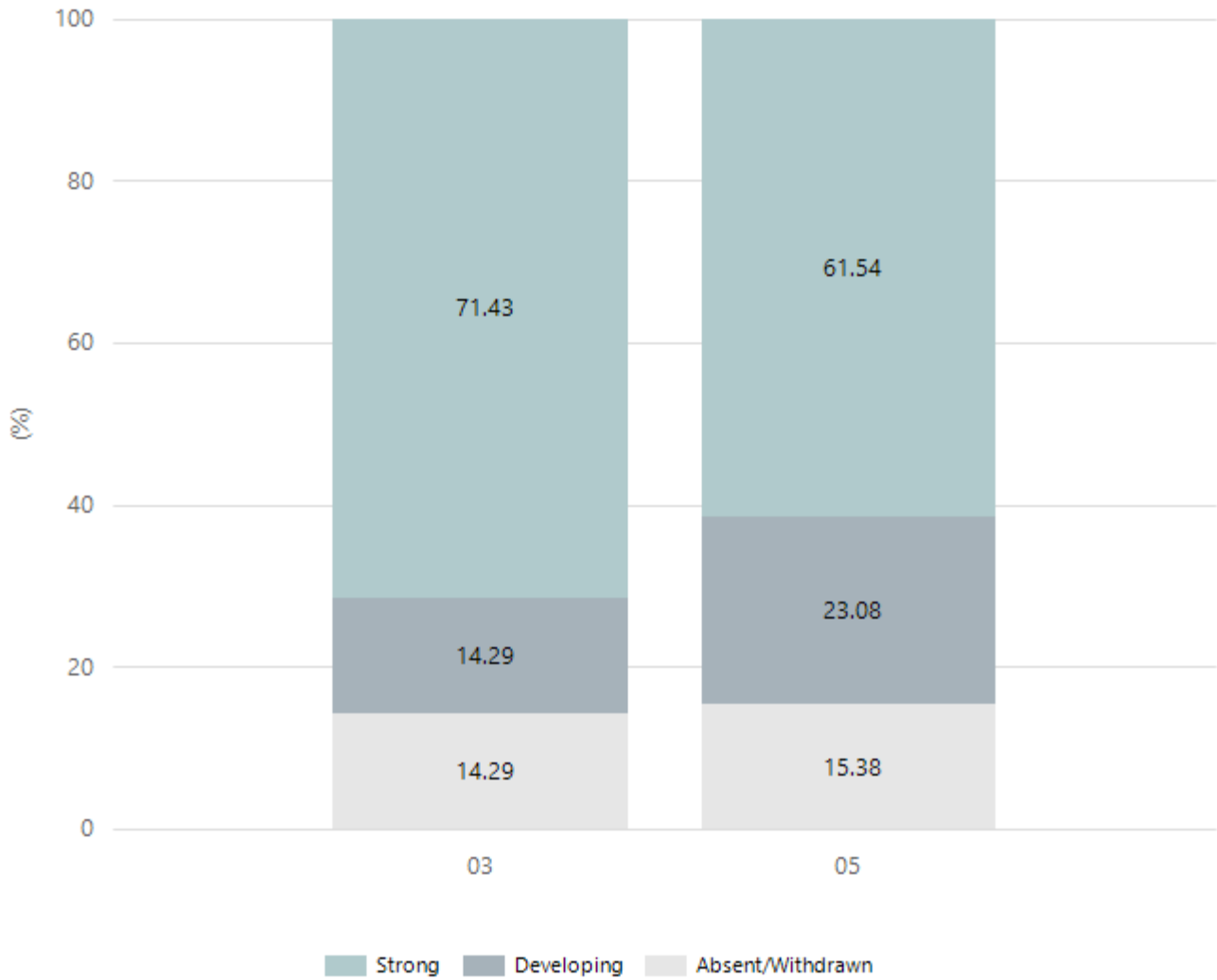
Reading



Year Level	03	05
Exceeding	3	1
Strong	9	7
Developing	1	2
Needs Additional Support		1
Absent/Withdrawn	1	2
Total	14	13

Data Source: Department for Education Assessment Data Holdings, 2023. When there are less than six students in a cohort, no data is supplied.

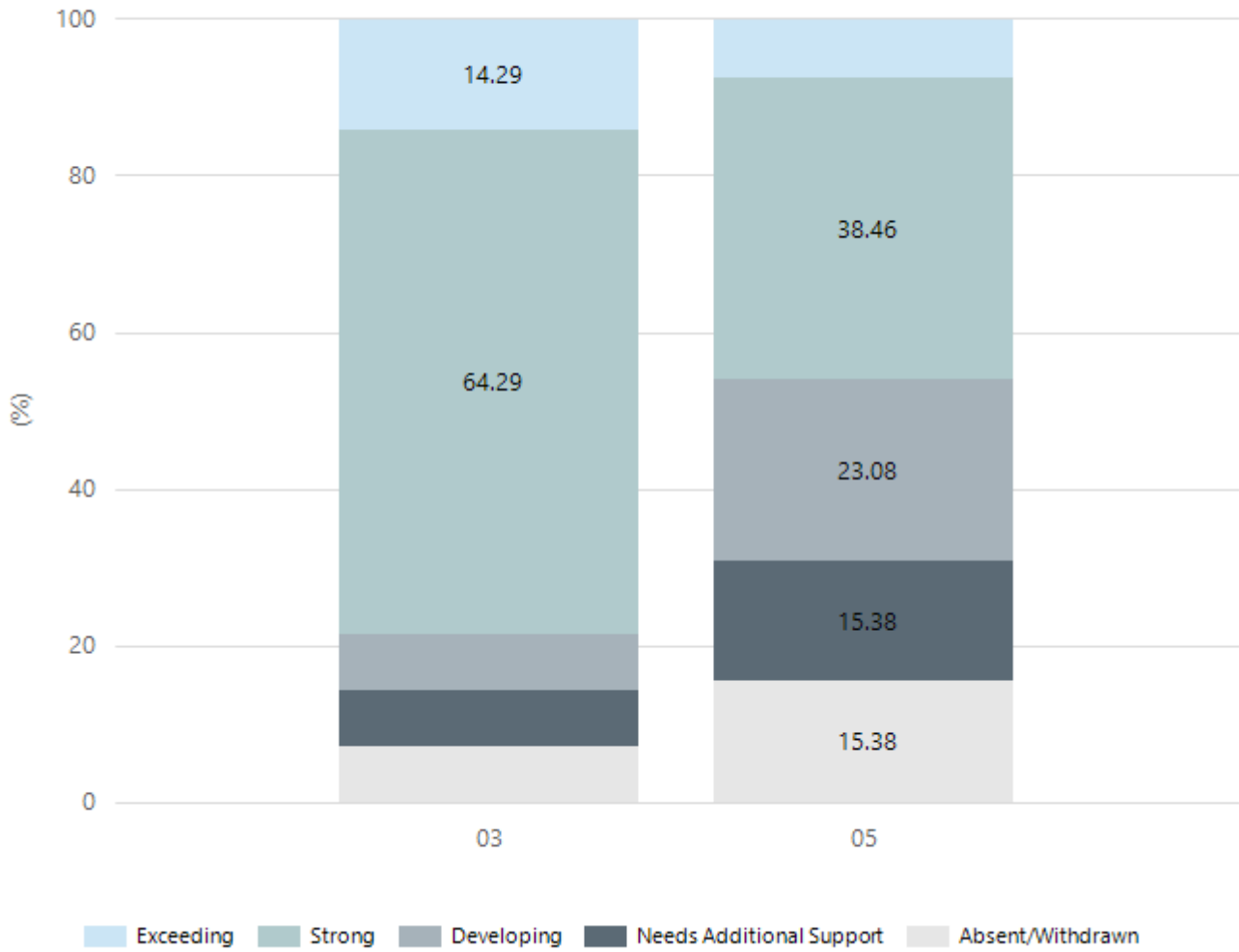
Writing



Year Level	03	05
Strong	10	8
Developing	2	3
Absent/Withdrawn	2	2
Total	14	13

Data Source: Department for Education Assessment Data Holdings, 2023. When there are less than six students in a cohort, no data is supplied.

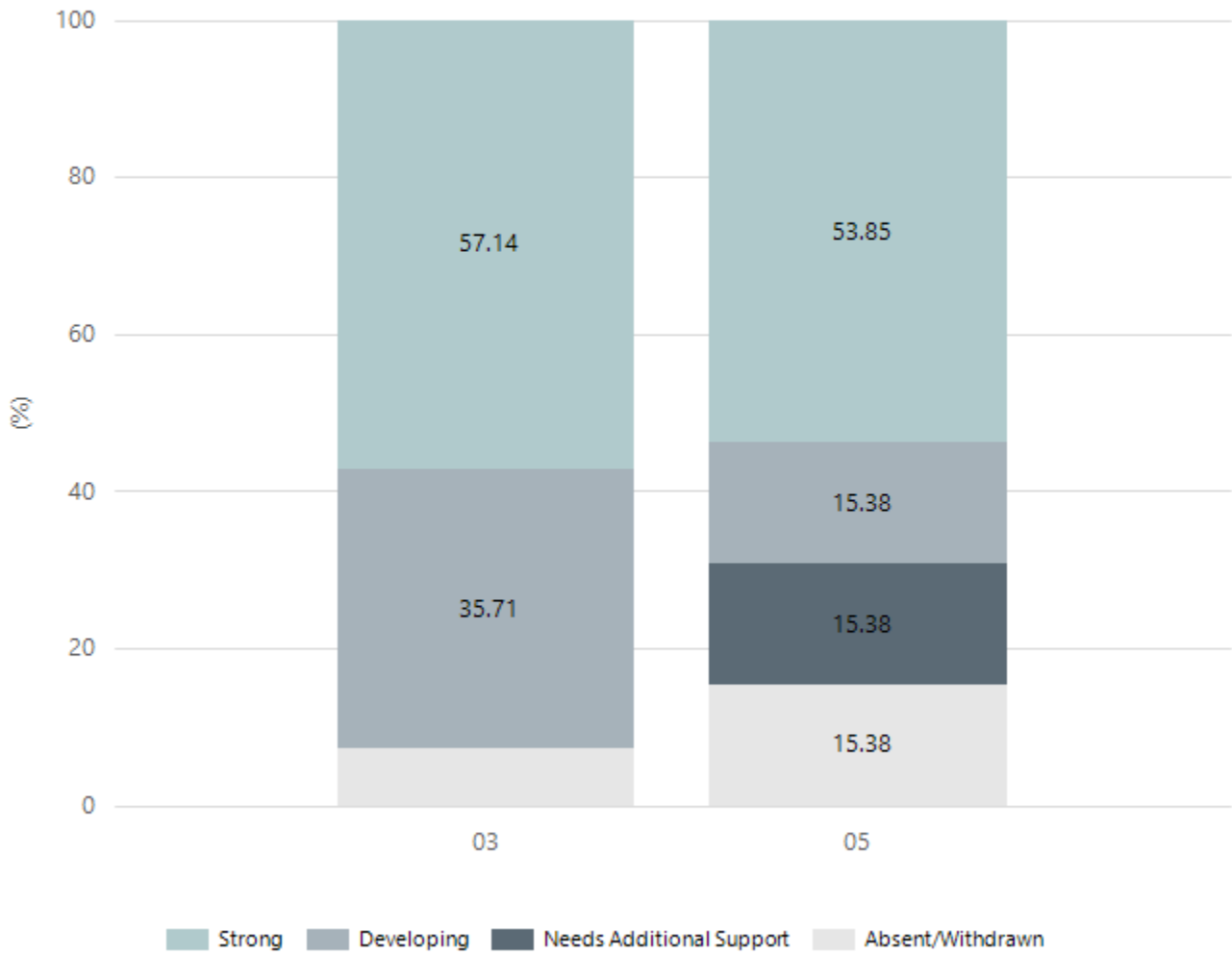
Grammar



Year Level	03	05
Exceeding	2	1
Strong	9	5
Developing	1	3
Needs Additional Support	1	2
Absent/Withdrawn	1	2
Total	14	13

Data Source: Department for Education Assessment Data Holdings, 2023. When there are less than six students in a cohort, no data is supplied.

Spelling



Year Level	03	05
Strong	8	7
Developing	5	2
Needs Additional Support		2
Absent/Withdrawn	1	2
Total	14	13

Data Source: Department for Education Assessment Data Holdings, 2023. When there are less than six students in a cohort, no data is supplied.

School Attendance

Year Level	2021	2022	2023
Reception	93.6%	85.5%	90.6%
Year 01	90.8%	88.7%	90.1%
Year 02	92.1%	86.9%	92.3%
Year 03	92.7%	85.6%	88.2%
Year 04	95.1%	89.1%	87.2%
Year 05	91.3%	89.5%	89.4%
Year 06	95.2%	82.1%	91.8%
Year 07	83.1%		
Total	91.4%	86.7%	90.0%

Data Source: Department for Education Attendance Data, Semester 1 Report 2023. A blank cell indicates there were no students enrolled. 'Primary Other' includes students enrolled in specialised education options. 'Secondary Other' includes students who have already spent a year at Year 12 and elected to undertake further study at Year 12.

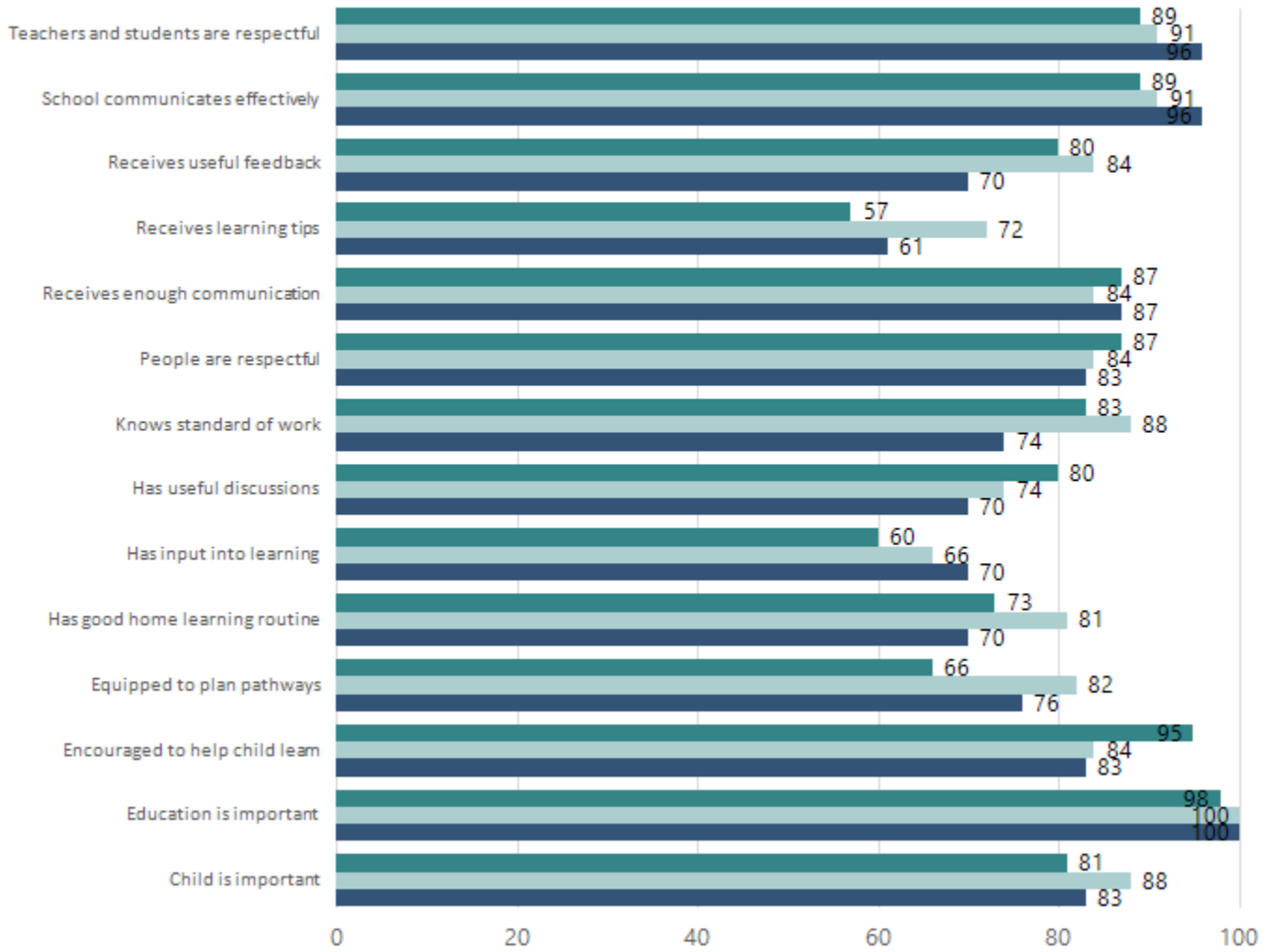
Attendance Comment

In South Australia, all children and young people must be in school from 6 years to 16 years old. They must attend a government or non-government school full time. From age 16 to 17 however, young people must attend school or an approved learning program (such as an apprenticeship, traineeship, accredited course or university). Schools and parents must encourage and support students to come to school every day. Parents and caregivers must make sure their child is enrolled in a school, and attends school all day and everyday it is open, unless a child is sick or has an approved exemption. Teachers and leaders actively follow up when a student misses school, including recording all absences and non-attendance. All schools in South Australia have local attendance procedures governed under the Education and Children's Services Regulations 2020.

Parent Opinion Survey Results

Proportion of agree/strongly agree response(%)

2021 2022 2023



Data Source: 2023 Department for Education Parent Opinions Survey, Term 3 2023.

Intended Destination

Leave Reason	Number	%
TG - TRANSFERRED TO SA GOVERNMENT SCHOOL	5	100.0%

Data Source: Department for Education Destination Data Report, 2023. Data extract term 3 2023. Data shows recorded destinations for students that left the school in the previous year. Data is uploaded by schools in term 3 and may not reflect final or total figures at time of report creation.

Highest Qualifications held by the teaching workforce and workforce composition

All teachers at this school are qualified and registered with the SA Teachers Registration Board.

Qualification Level	Number of Qualifications
Bachelor's degrees or Diplomas	10
Postgraduate Qualifications	4

Data Source: Data extracted from Mandatory Workforce Information Collections as on the last pay date of June 2023. As self-reported by staff in the system.

Please note: Data includes staff who are Actively employed and on extended paid leave. Please note only the highest qualification of the Teaching staff is reported. Excludes any number of other certifications earned.

Workforce composition including indigenous staff

	Teaching Staff		Non-Teaching Staff	
	Indigenous	Non-Indigenous	Indigenous	Non-Indigenous
Full-Time Equivalents	0.0	11.1	0.7	5.1
Persons	0.0	14.0	1.0	7.0

Data Source: Data extracted from Mandatory Workforce Information Collection as on the last pay date of June 2023.

Please note: Data includes staff who are actively employed and on extended paid leave. "Indigenous category" is self-reported by staff in the system.

Financial Statement

Funding Source	Amount
Grants: State	1,655,990.19
Grants: Commonwealth	7,100.00
Parent Contributions	35,234.79
Fund Raising	21,899.65
Other	12485.12

Data Source: School supplied data.